



2018 ! 41 " # \$ % & * + , - . / 0 1 2

世联点评

2018 41 (10 8 -10 14) 7 24.5 6
1 4 3.33 3

2018 41 (10 8 -10 14) 4 771
2376 2.99% 18.32 24.13%
8779.37 / 1.78%

3 7 6 4
! " #
! 2376 8779.37 / 77 \$ % &



3 4 \$ % & '

1 4 \$ % 5 6

2018 41 (10 8 -10 14) 7 24.5 6
1

2018 ! 41 " 7 8 , % 9 : ; \$ % 5 6 3 < =

Table with 8 columns: ID, @A, GH, %, %J KO, M@, N/%@OBL, POQR. Rows include W20-18-0066, W10-18-0045, W10-18-0043, W10-18-0044, W10-18-0042, W04-18-0033, W15-18-0053.

J K ' L M J K N





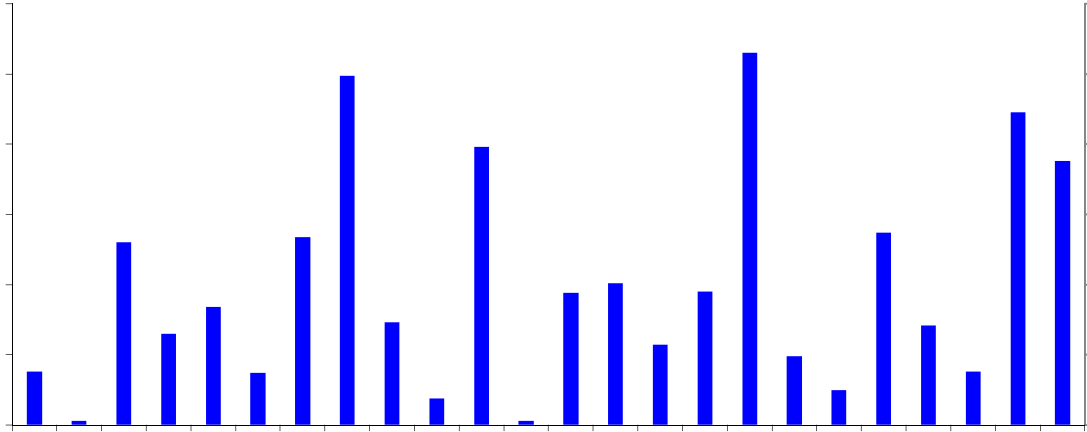
2018 41 (10 8 -10 14)
24.13%

2376

2.99%

18.32





JK' LM JK N

2018 41 (10 8 -10 14) - . / O1 M

2018 78! 41 " (10.8-10.14F* +, wxyz e{ f t uB } - . ~ { f F							
{ f	! j	xyfg	" #	@ABCOF	~ B\$LF	vOBL/D EF	" v@A BOF
1	%&	' () : *	119	1.151727	1.072812	9314.81	96.78
2	+!	, - . /	188	1.691242	0.867896	5131.71	89.96
3	O1	2345	49	0.459363	0.601744	13099.52	93.75
4	67	89: ; 5	23	0.471962	0.529975	11229.19	205.20
5		8@ >	3	0	0.482543	11110.27	1
6	Fj		60	0.723814	0.446143	6163.78	120.64
7		. ml 8J ; 5	46	0.431916	0.427526	9898.37	93.89
8	8	' () LM* TNj /OP 8; 5B' (8E	38	0.378683	0.400762	10583.04	99.65
9			45	0.47664	0.395118	8289.66	105.92
10			47	0.387518	0.391651	10106.65	82.45
11	23	4 56(25		0.36397	20683.98	70.39
12	1%	78i j	26		0.349948	10432.53	129.02
13	1%	9o: (26		0.296934	9719.88	117.50
14	2&	; < 45i j	17	0.191994	0.28196	14685.87	112.94
15	=	> ? @ i j	25	0.281508	0.269113	9559.70	112.60
16	2&	hi j	22	0.260677	0.264343	10140.63	118.49





kl 1993 /hmno\$p q rs, tuvw 2007 xyz{ k
2009 8 28 | } ~ ! " # \$ _ % & A , ' Q tu(
) 20 , B* h+, tu(, 15000. - . 2 _AB (q , /O1z2 rst
u 600 _(345 6782014 9: s 8.2; , 1 hm1zO 1\$ < 3000; , tu | 14
=> 3 O 1? @, A; B9 1 4.5%, CDEFGH tu
2014 IJK. F I LMF I NI OP Q RSTU tu #
, U VJ WXY SZ [h B*, tu\! V] ^ _ - ` , uab cd u efQ, gJtu
N,hkNI !JKYi [^ , 5 j tukl mn^ Of N abo Of xypc u y, tu
N OP(gJ N e ^J, TU tu qr U yz O Of s ptu 8

tu& O=: 2028v
tu u > 14w
xy M0755-2216 2800
z{ M0755-2216 2900
| } M518001

) 5
tu& O=: 5047v
B* ~ ! 10w
xy M0755-2216 2666
z{ M0755-2216 2902
| } M518001

d rs
d s\&b 3 :
dx d B 11w
xy M020-38972777
z{ M020-3879 9392
| } M510620

3& 9 :
j 7vw 301
xy M0757-8314 1993
z{ M0757-8314 1980
| } M528000

rs
3& > D:
k\hi > 21w11
xy M0752-281 7800
z{ M0752-278 0566
| } M516000

bo rs
bo M&OI >: 32v V12 8 j 5529
xy M0756-332 0500
z{ M0756-332 0700
| } M519000

~ B : D 80v
shi k! 3605v
xy M0731-8823 2555
z{ M0731-8823 0909
| } M410005

a }) 5
O a N9&+
d A 14
xy M0871-3626539
z{ M0871-3615052

rs
O%&O%: 226v
hi 19w1910
xy M0371-8614 3608
z{ M0371-8614 3609
| } M450002

0 -9.12 j /

