





10 28





29

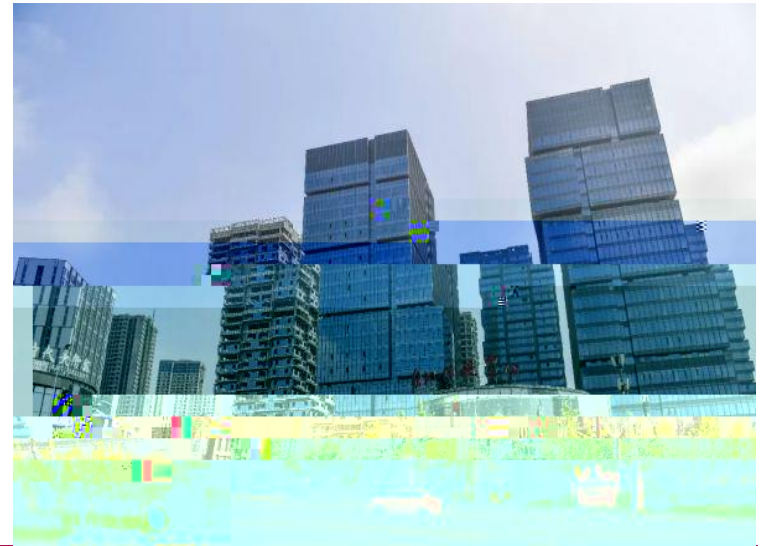
" "

" "

" "

P2P

10 27





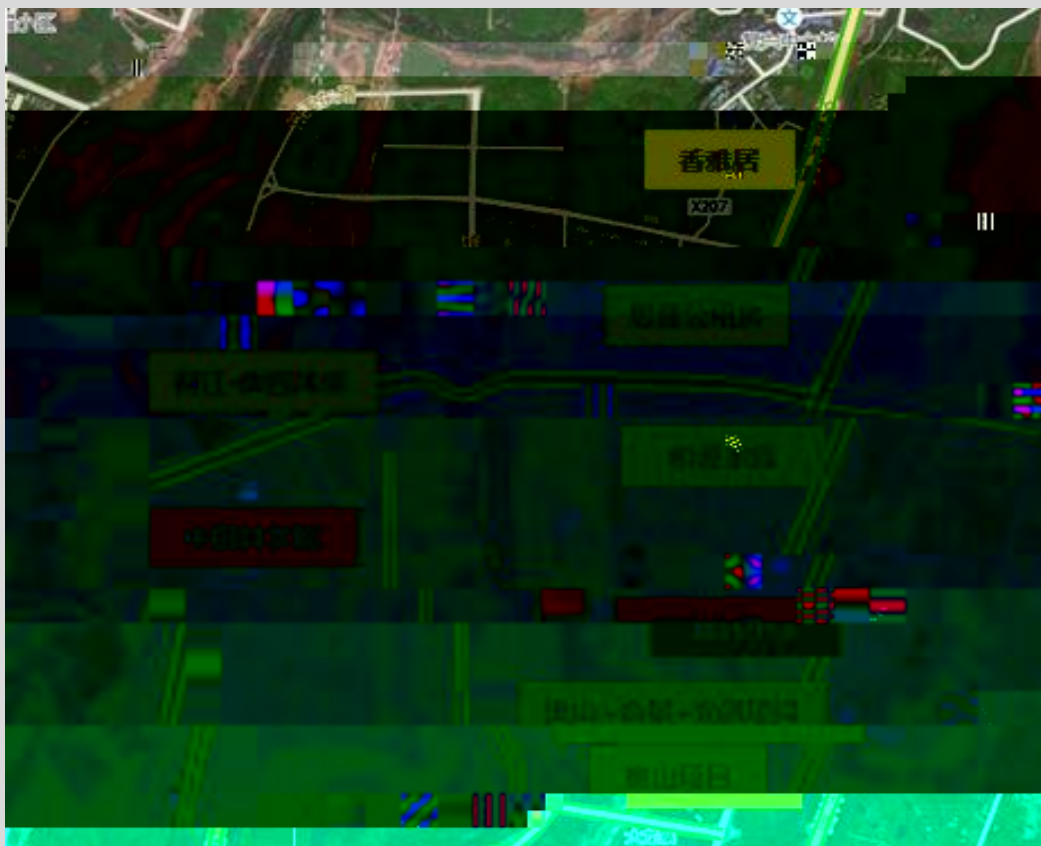






C C45-1/02 C46-2/02

7.5  
112  
9  
1.2  
10%  
3.6  
4075 /  
326 /  
11 20





D D27-1/03

2018-10-31

116.9

7.8

19.5

**2.5**

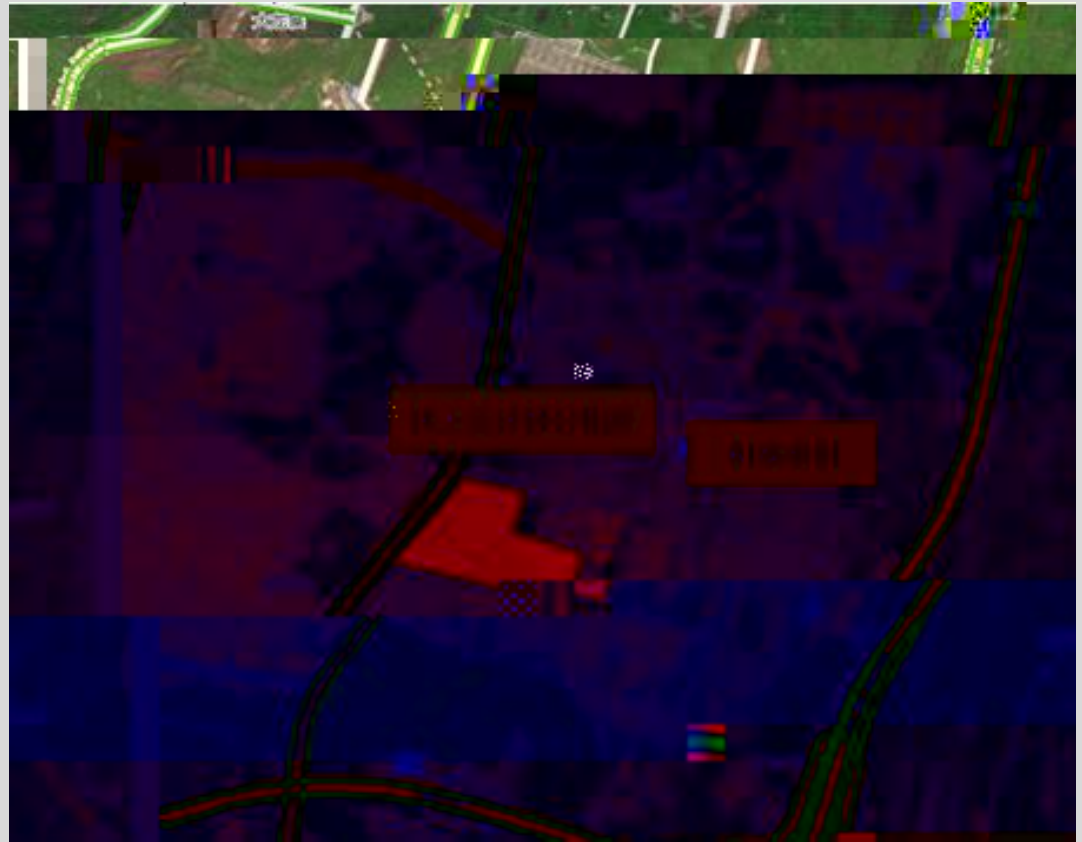
6.8

3500 /

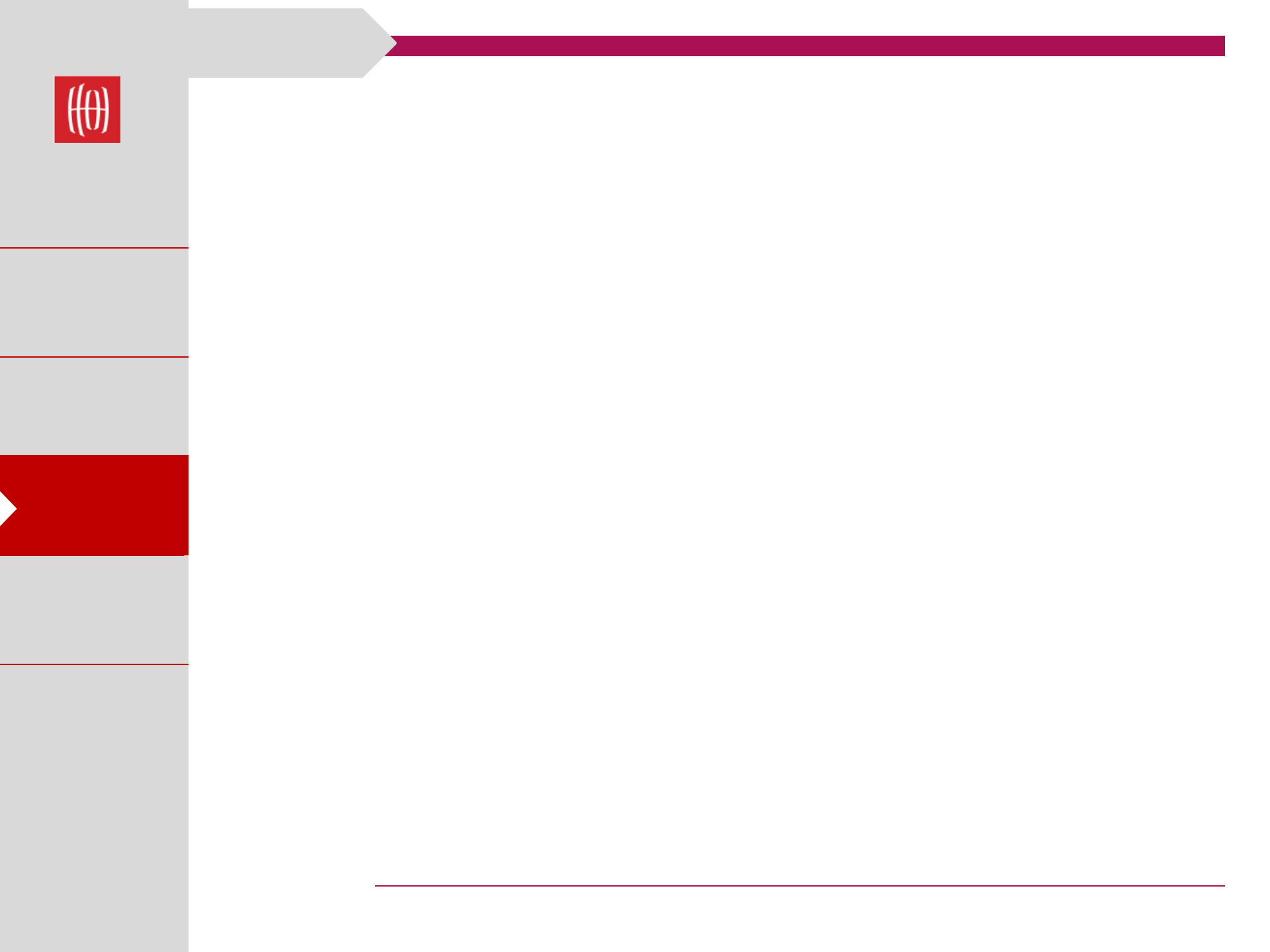
7.5

3822 /

9.1%

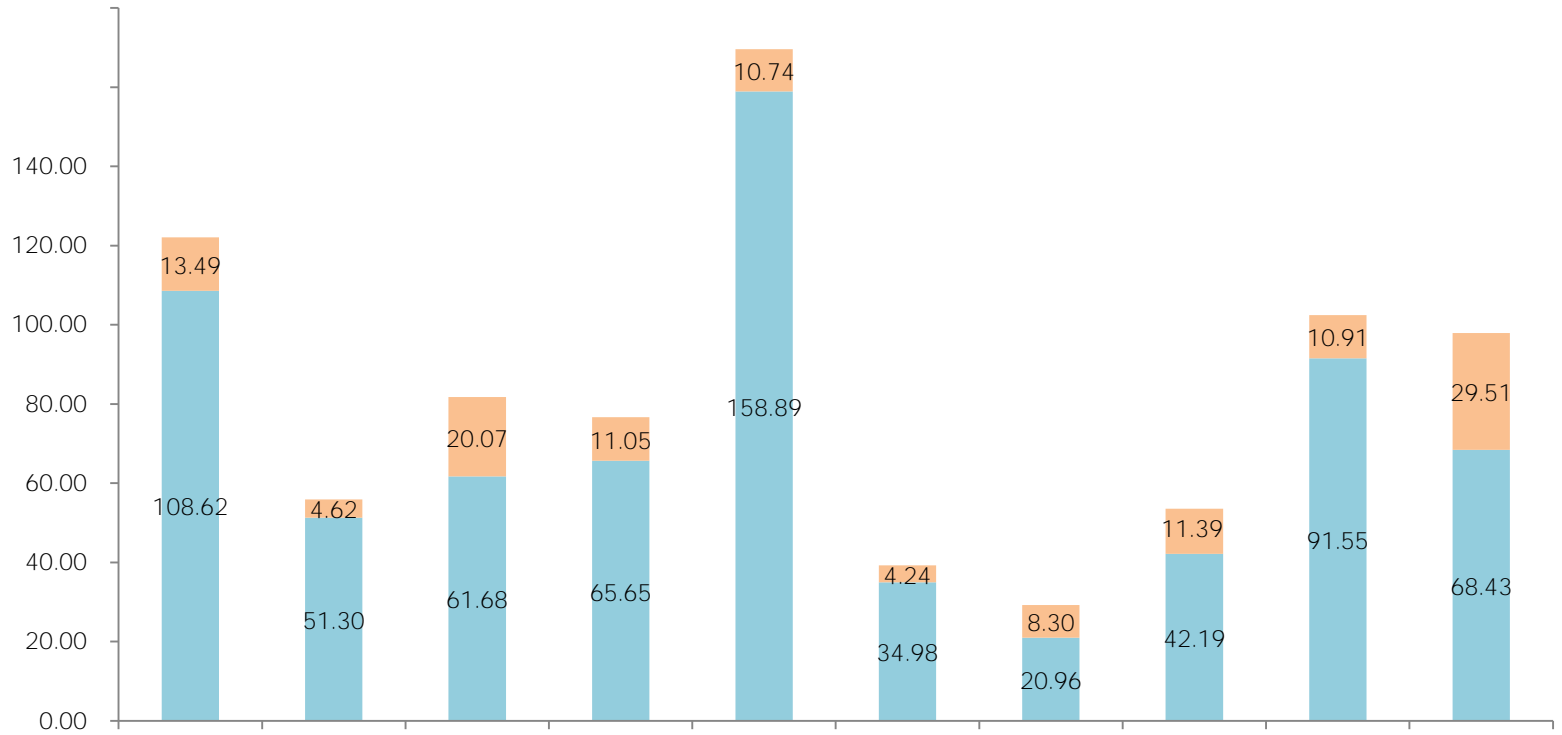






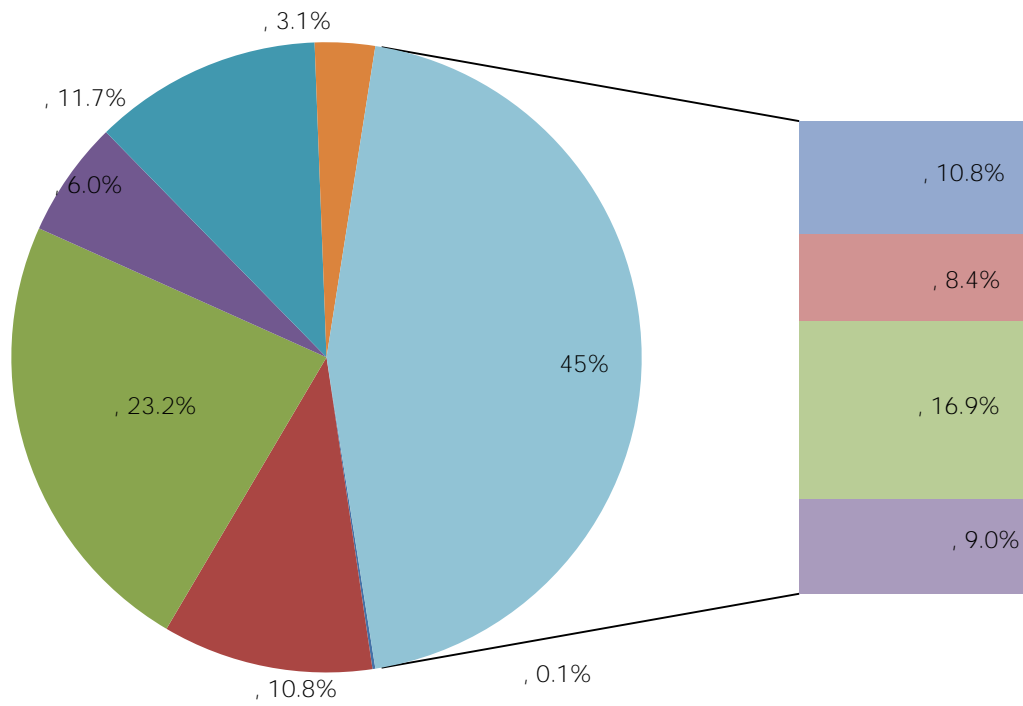


2018





" "

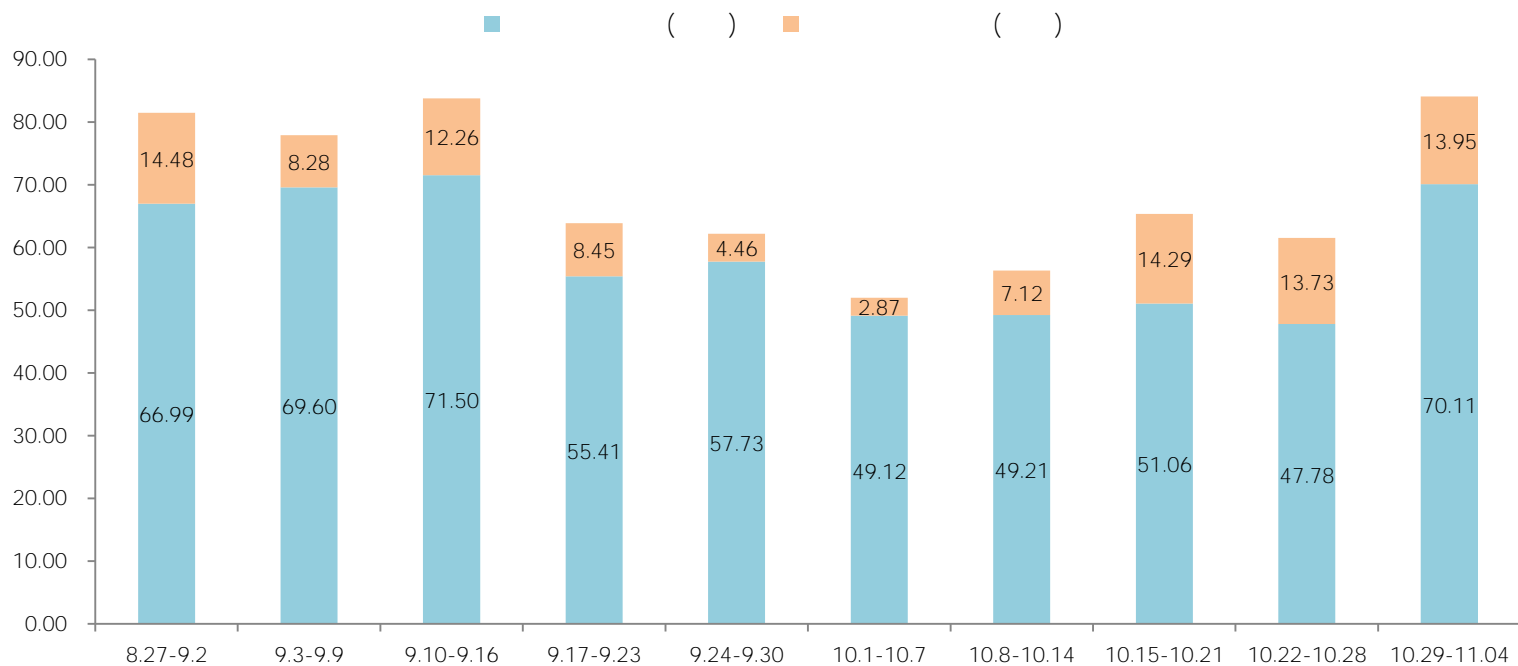




2		482	3.65	9370
3		397	3.98	10127
4		396	4.91	12761
5		327	1.52	8641
6		326	3.24	9635
7		265	2.44	8178
8		252	2.21	8799
9		251	2.19	10735
10		222	2.30	10388
11		220	1.91	13233
12		195	1.95	8485
13		186	1.84	9287
14		183	2.74	14994
15		59	18.7	0



2018







|--|--|--|--|--|



